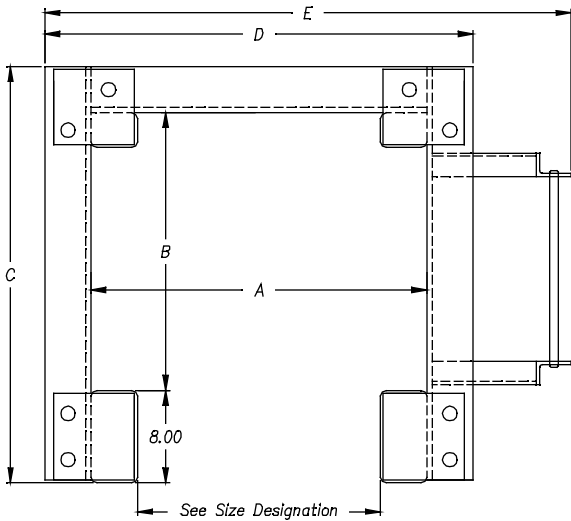


HMC Heavy-Duty Box Leads



Engineered for superior strength & deflection properties

- ◆ Heavy wall, high-strength structural box tubing construction provides abrasion resistance and ensures a long rail life.
- ◆ Precision fabricated in production jigs to ensure strict dimensional tolerances and accurate connection alignment on site.
- ◆ Available in 10' increments in swinging, fixed and vertical travel configurations. Custom lengths also available.
- ◆ Rigid bolted connections provide full-moment capability and superior deflection properties.
- ◆ Heavy-duty lead ladders are braced at every yoke to ensure personnel safety.
- ◆ Deep sections accommodates diesel, hydraulic and air/steam hammers.
- ◆ All lead sizes are compatible with comparable size HPSI leads.
- ◆ Full lead bracing allows any batter condition – fore, aft and side.

DESCRIPTION	21" x 8" Leads	27" x 8" Leads	33" x 8" Leads
Basic set average weight available in: 30' Tapered top 10', 15' or 20' Intermediates 10' Stab point bottom	105 lbs/lf	135 lbs/lf	170 lbs/lf
DIMENSIONS			
Dimension "A"	29"	35"	41"
Dimension "B"	24"	28"	32"
Dimension "C"	36"	40"	44"
Dimension "D"	37"	43"	49"
Dimension "E"	45 _"	51 _"	57 _"
FIXED LEAD ACCESSORIES			
10' Fixed boom point section	N/a	2,350 lb	2,700 lb
Universal 2-axis boom point connector	N/a	1,200 lb	1,500 lb
Rooster sheave – 3 line	N/a	250 lb	250 lb
Headblock – 2 line	N/a	1,200 lb	1,400 lb
Headblock – 3 line	N/a	1,400 lb	1,600 lb
Headblock – 2 line plus side auger arm	N/a	1,800 lb	2,100 lb
Side mounted auger track	N/a	35 lbs/lf	35 lbs/lf
VERTICAL TRAVEL ACCESSORIES			
10' sliding track w/ clamp plates & bolts	N/a	675 lb	890 lb
Sliding box @ boom point connector	N/a	900 lb	1,150 lb
Vertical travel sheave box (3 sheaves)	N/a	500 lb	700 lb
Sliding box @ spotter	N/a	370 lb	450 lb
OTHER LEAD ACCESSORIES ALSO AVAILABLE			
Custom designed boom point connectors (2-axis or 3-axis) to fit any crane.			
Manual or hydraulic pile gates or hydraulic pile monkeys.			
APPLICATION NOTES			
Never erect leads without first confirming both the structural integrity of the leads and the structural adequacy of the leads to handle the intended application. Lead failure can result in death and/or destruction of property.			



Corporate Office:
5025 New Haven Avenue
Fort Wayne, IN 46803
Tele: (800) 348-1890